

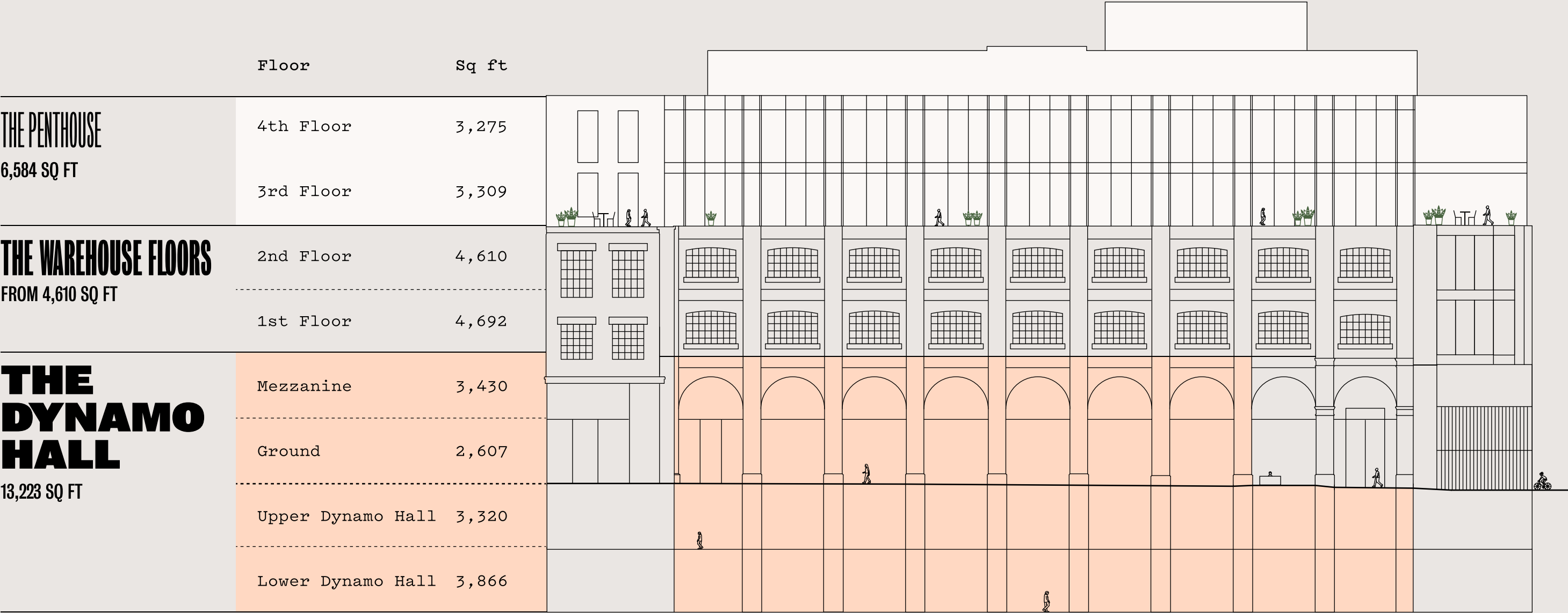
ARCLIGHT

FLOORPLANS

60 SHORT'S GARDENS, WC2

SCHEDULE OF AREAS

TOTAL 29,109 SQ FT



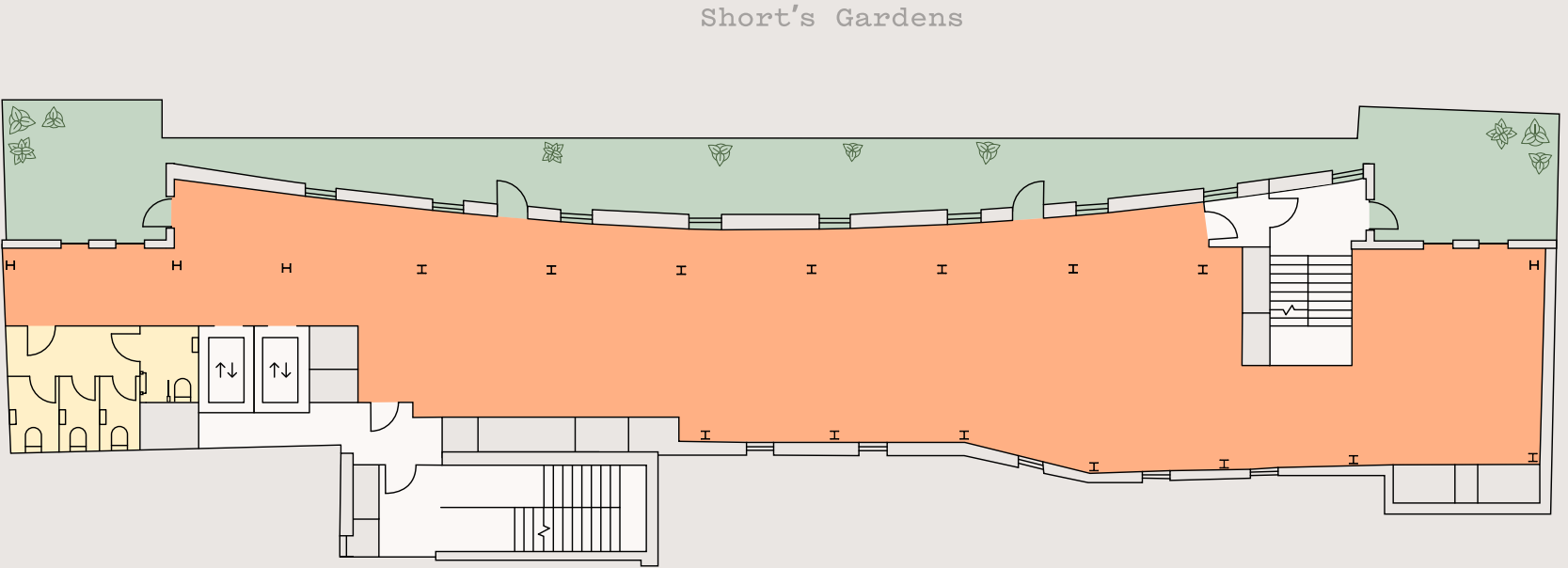


THE PENTHOUSE

6,584 sq ft workspace across 3rd and 4th
floors, featuring full-height, dual-
aspect glazing.

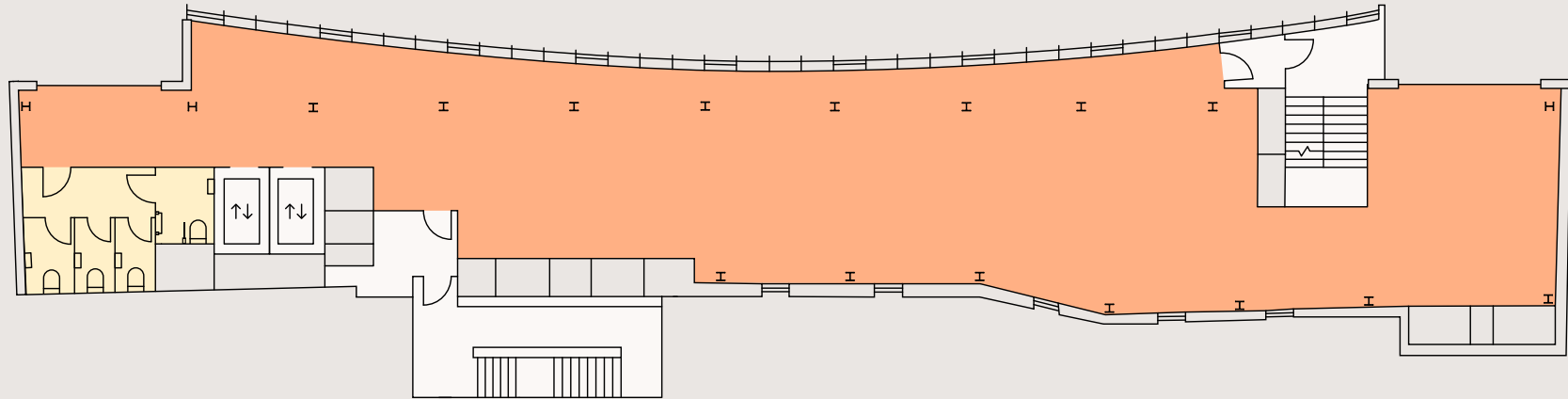
THIRD FLOOR

- 3,309 sq ft | 307 sq m
- Terrace 1,235 sq ft
- WCs
- Core



FOURTH FLOOR

- 3,275 sq ft | 304 sq m
- WCs
- Core



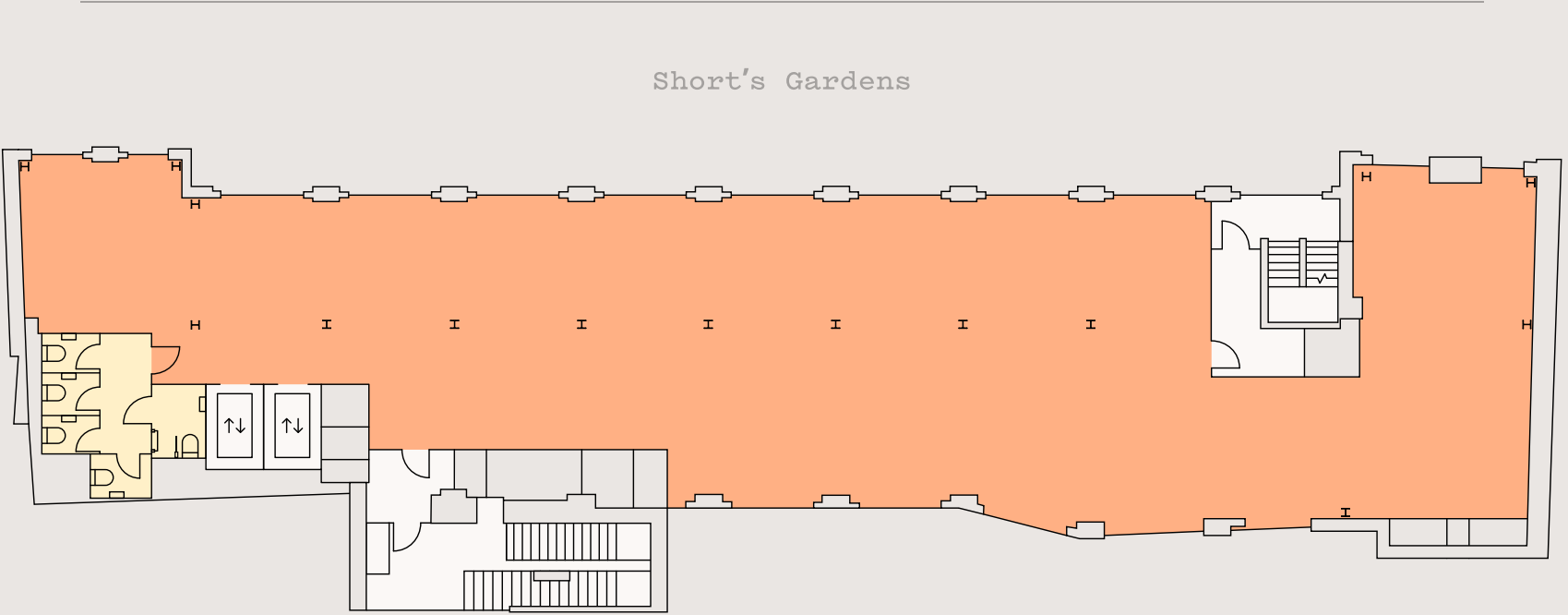


THE WAREHOUSE FLOORS

Large open-plan, dual-aspect workspaces with original Crittall style windows and brickwork.

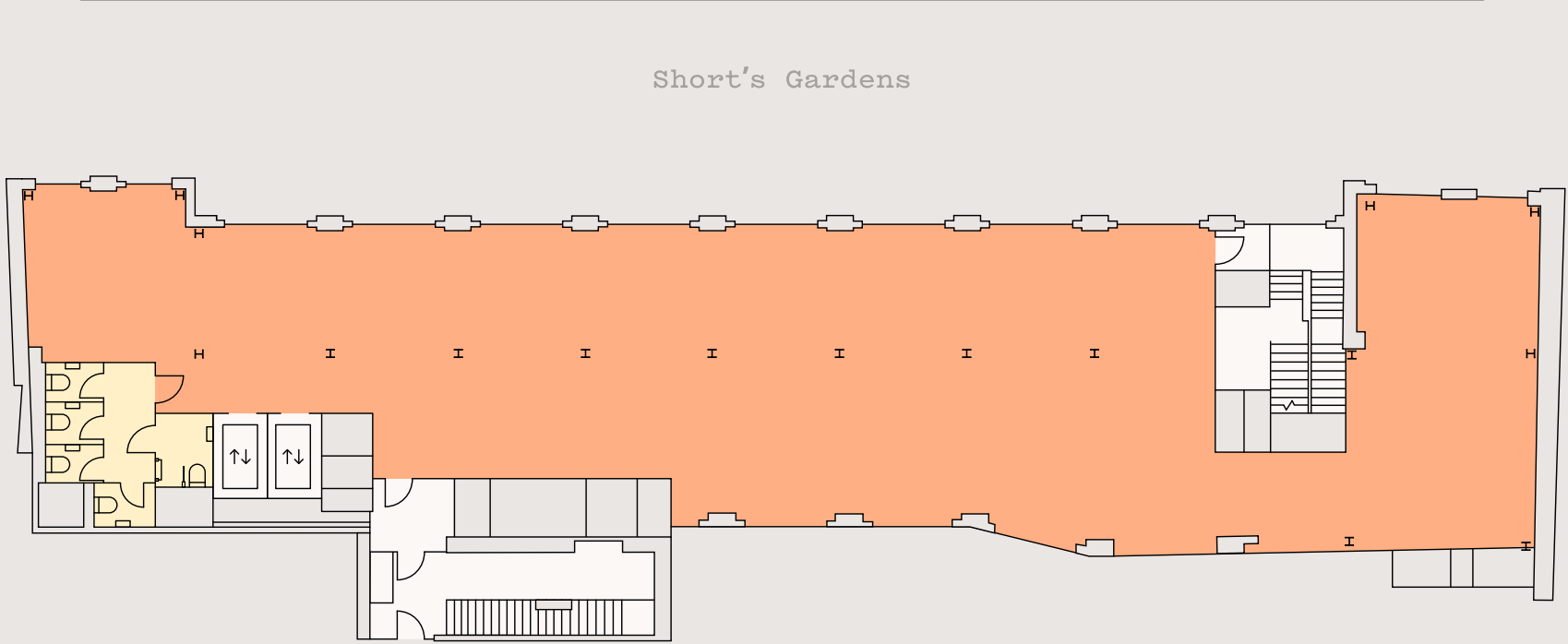
FIRST FLOOR

- 4,692 sq ft | 436 sq m
- WCs
- Core



SECOND FLOOR

- 4,610 sq ft | 428 sq m
- WCs
- Core



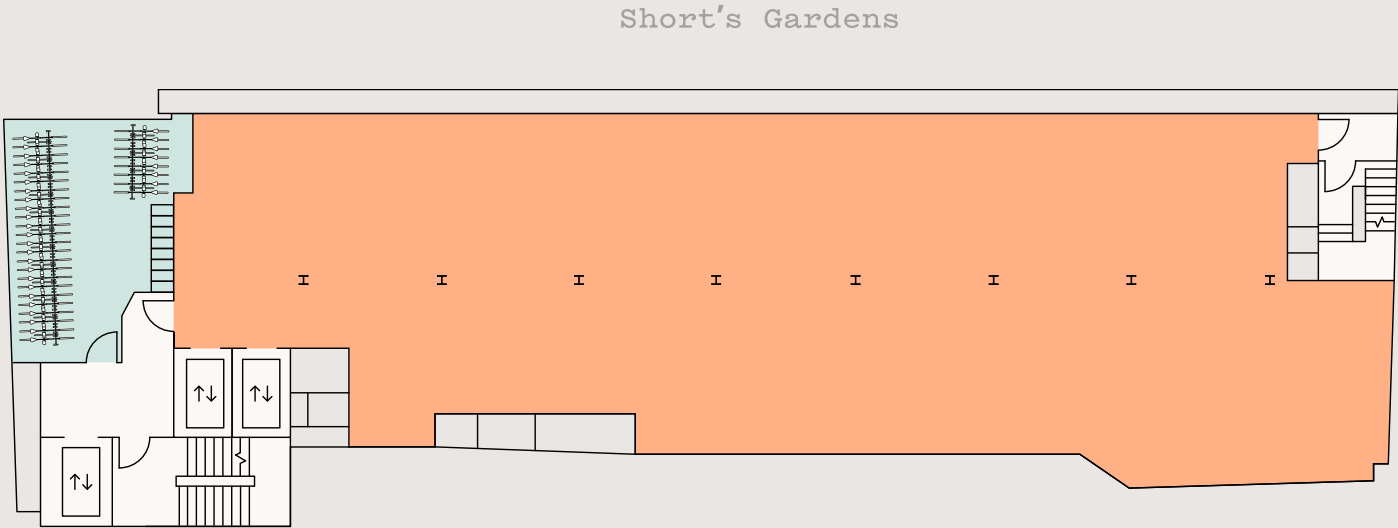


THE DYNAMO HALL

with a 13.5m-high atrium space and
original architectural features
across four floors.

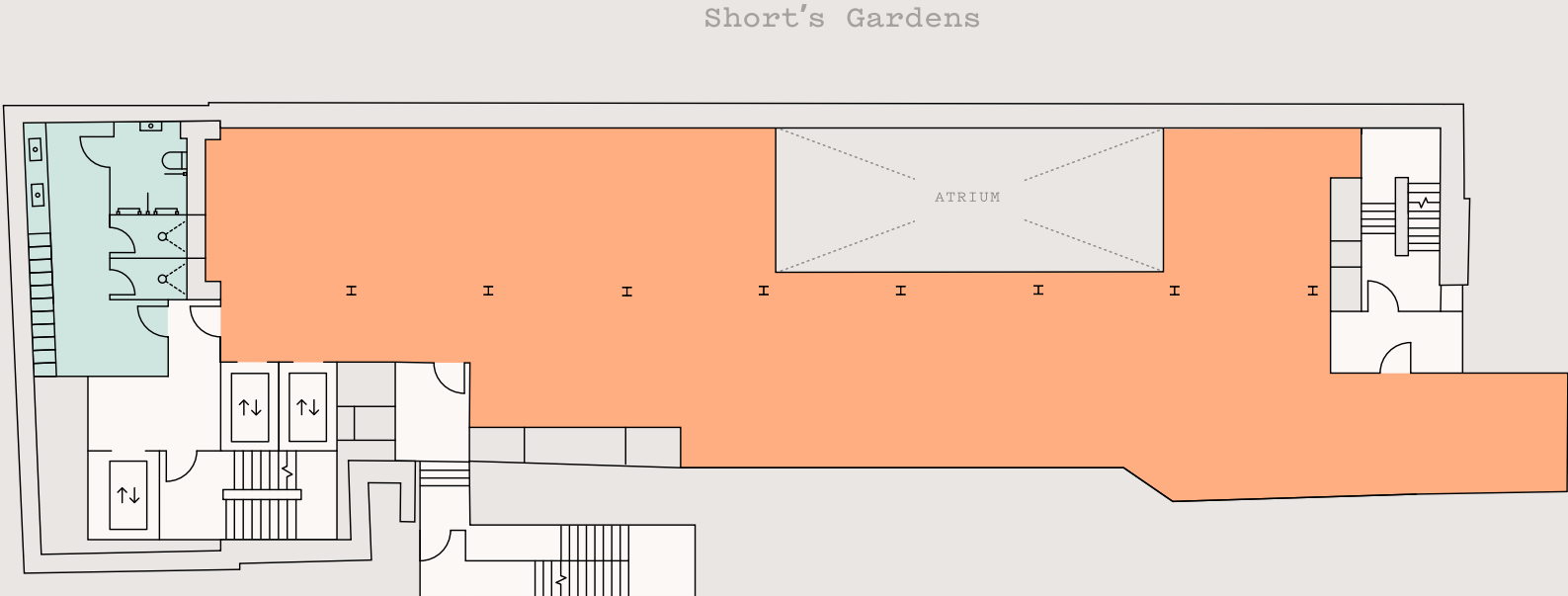
LOWER DYNAMO HALL

- 3,866 sq ft | 359 sq m
- Cycle storage
- Core



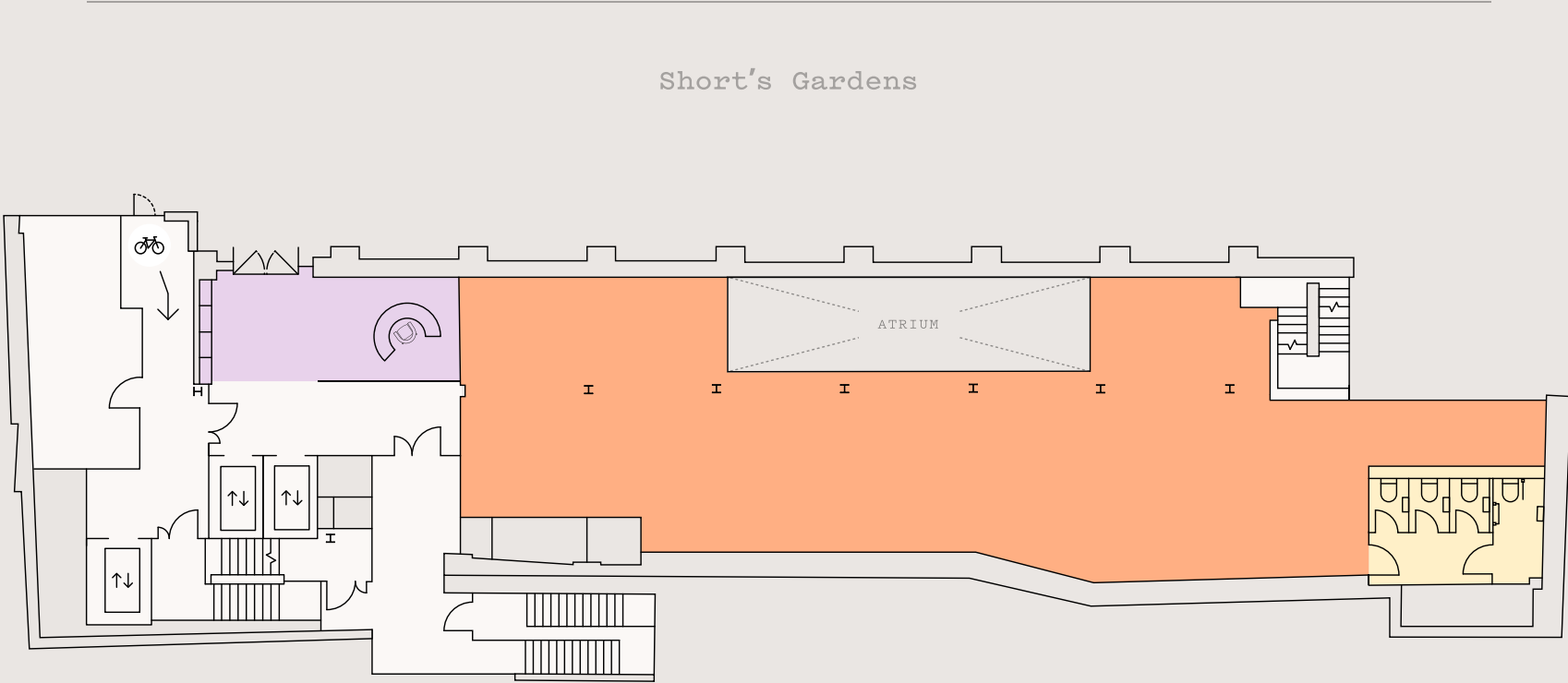
UPPER DYNAMO HALL

- 3,320 sq ft | 308 sq m
- Changing facilities
- Core



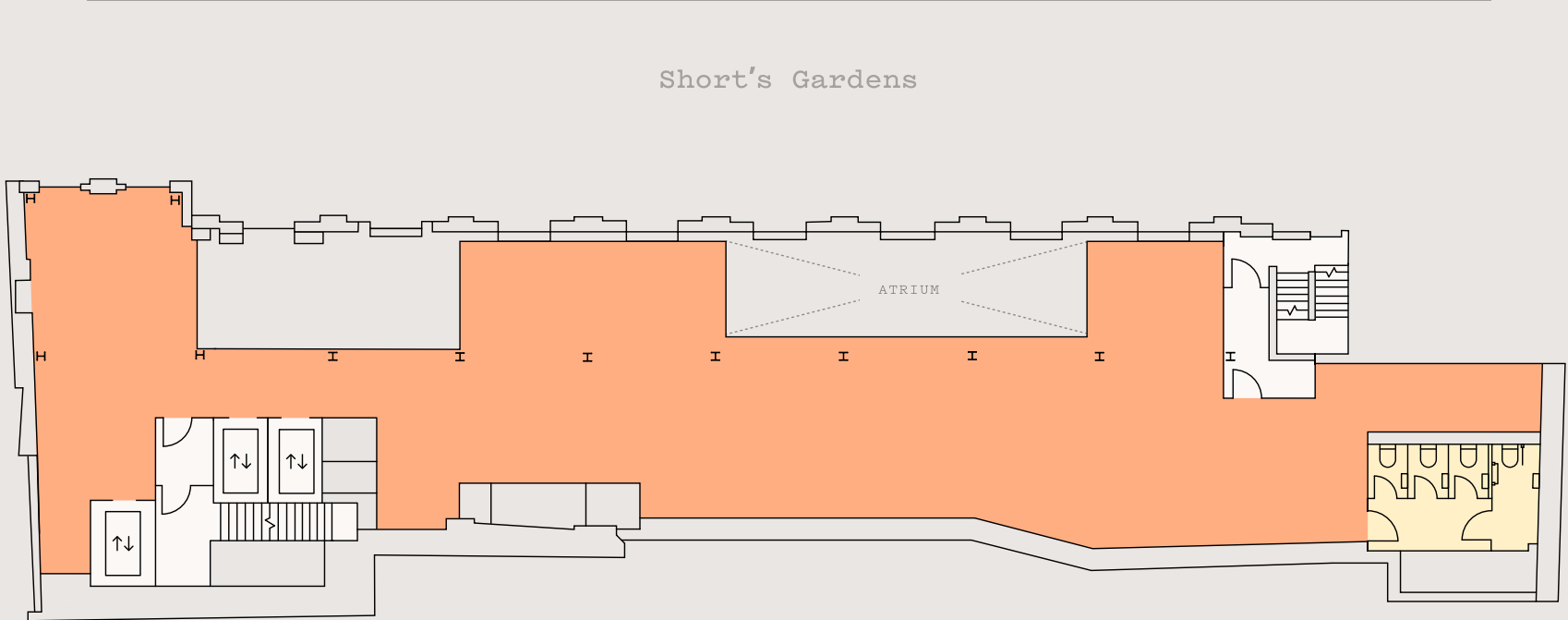
GROUND FLOOR

- 2,607 sq ft | 242 sq m
- Reception
- WCs
- Core



MEZZANINE

- 3,430 sq ft | 319 sq m
- WCs
- Core



ARCLIGHT

arclight.london

LEASING TEAM

RX
LONDON

Catherine Lloyd
catherine.lloyd@rx.london
+44 (0)7795 445 833

Imogen Purvis
Imogen.Purvis@rx.london
+44 (0)7377 978 348

Sophie Bartlett
Sophie.Bartlett@rx.london
+44 (0)7802 338 295

BLUEBOOK

Chris Watkin
chris@bluebooklondon.co.uk
+44 (0)7730 066 523

Whitney Bowrin
whitney@bluebooklondon.co.uk
+44 (0)7841 779 883

Oliver Pardoe
ollie@bluebooklondon.co.uk
+44 (0)7748 626 103

PROJECT TEAM

Development by
Span Group and Pearl & Coutts

Designed by
Buckley Gray Yeoman

Delivered by
Legendre UK

Bluebook and RX London on their behalf and for the Vendors or Lessors of this property whose Agents they are, give notice that: 1. These particulars are set out as a general outline only for guidance to intending Purchasers or Lessees, and do not constitute any part of an offer or contract. 2. Details are given without any responsibility and any intending Purchasers, Lessees or Third Parties should not rely on them as statements or representations of fact, but must satisfy themselves by inspection or otherwise as to the correctness of each of them. 3. No person in the employment of Bluebook or RX London has any authority to make any representation or warranty whatsoever in relation to this property. 4. Unless otherwise stated, all prices and rents are quoted exclusive of VAT. (October 2024)